

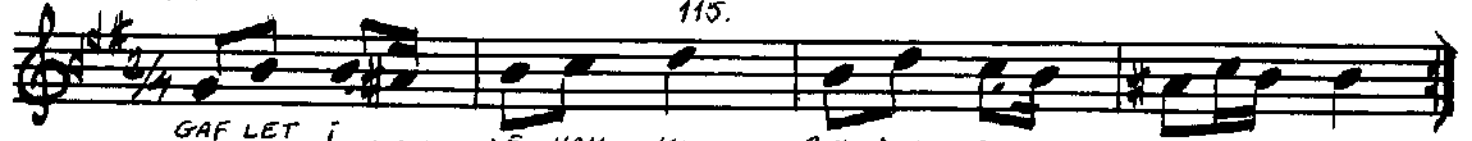
Nimco/yon

SEGÂH İLÂHÎ

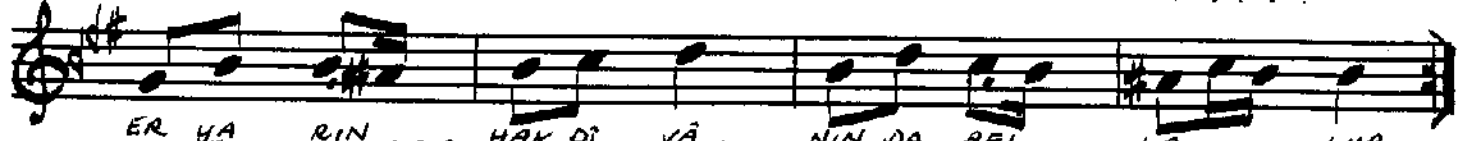
Beste: BEKİR SİDİKİ SEZGİN

Güfte: YUNUS

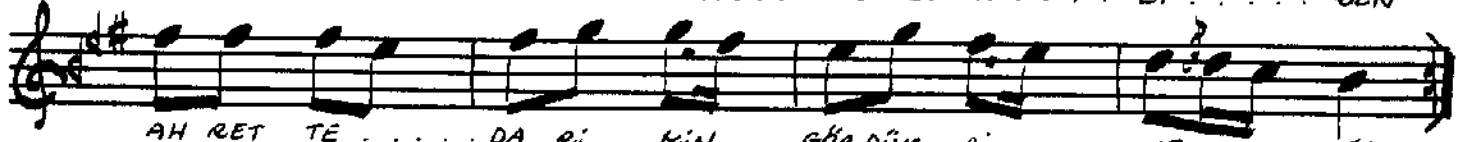
115.



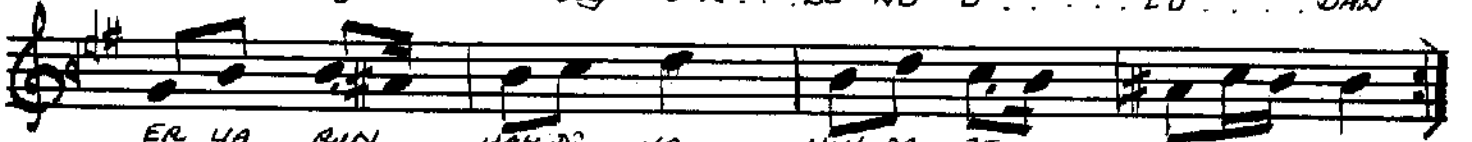
GAF LET İ . . . LE HAK KI . . . BUL DUM Dİ . . . YEN . . . LER
KI MİN A . . . Dİ SO FU . . . KI Mİ NİN . . . DER . . . VİŞ
DEV LET Lİ . . . YİM DE YU . . . FA Kİ RE . . . GÜL . . . ME
A ŞIK YU . . . NUS SÖY LE . . . KA LÖ BE . . . Lİ . . . DEN



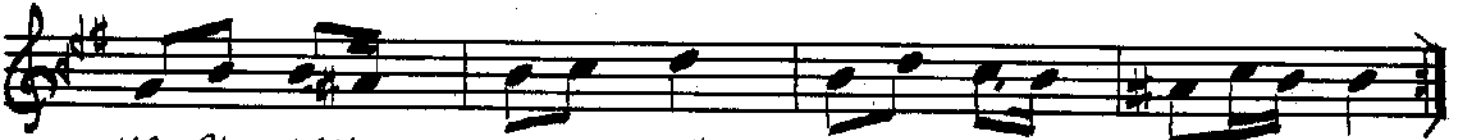
ER YA RİN . . . HAK Dİ VÂ . . . NİN DA BEL . . . LÖ . . . LUR
E GER DER . . . VİŞ İ SEN . . . TAK VA YA . . . GA . . . LİŞ
GÜ LÜP DEN . . . LÖ DEN LÖ . . . KEM NA ZAR . . . KİL . . . MA
MU Cİ ZAT . . . NE Bİ DEN . . . MÜR VET A . . . Lİ . . . DEN



AH RET TE . . . DA Rİ KİN . . . GÖR DÜM Dİ . . . YEN . . . LER
GİZ Lİ YOL . . . DAN KAR DER . . . MEV LÂ YA . . . E . . . RİŞ
Ö LÜM VAR . . . DİR YÂ HÜ . . . SEN GA FİL . . . OL . . . MA
BİZ DE BÖY . . . LE DÜY DUK . . . BU NU U . . . LU . . . DAN



ER YA RİN HAK Dİ VÂ . . . NİN DA BEL . . . LÖ . . . LUR



YA AL LAH . . . YA AL LAH . . . AL LAH AL . . . LAH AL LAH

Bestekârın el yazısı, notadan güfte ilâve ederek
yazdım. 18.11.1989

Öney Kosal